

# Habitats and microhabitats

A habitat is a home for plants and animals. The North Downs has a rich mixture of habitats (chalk grassland, scrub, hedgerows, woodlands (ancient and coppice woodland, veteran trees and wood pasture), traditional orchards, chalk rivers, arable and mixed farmland), which provide homes for many plants and animals.

How many animals can you find in the drawing of the woodland habitat below?

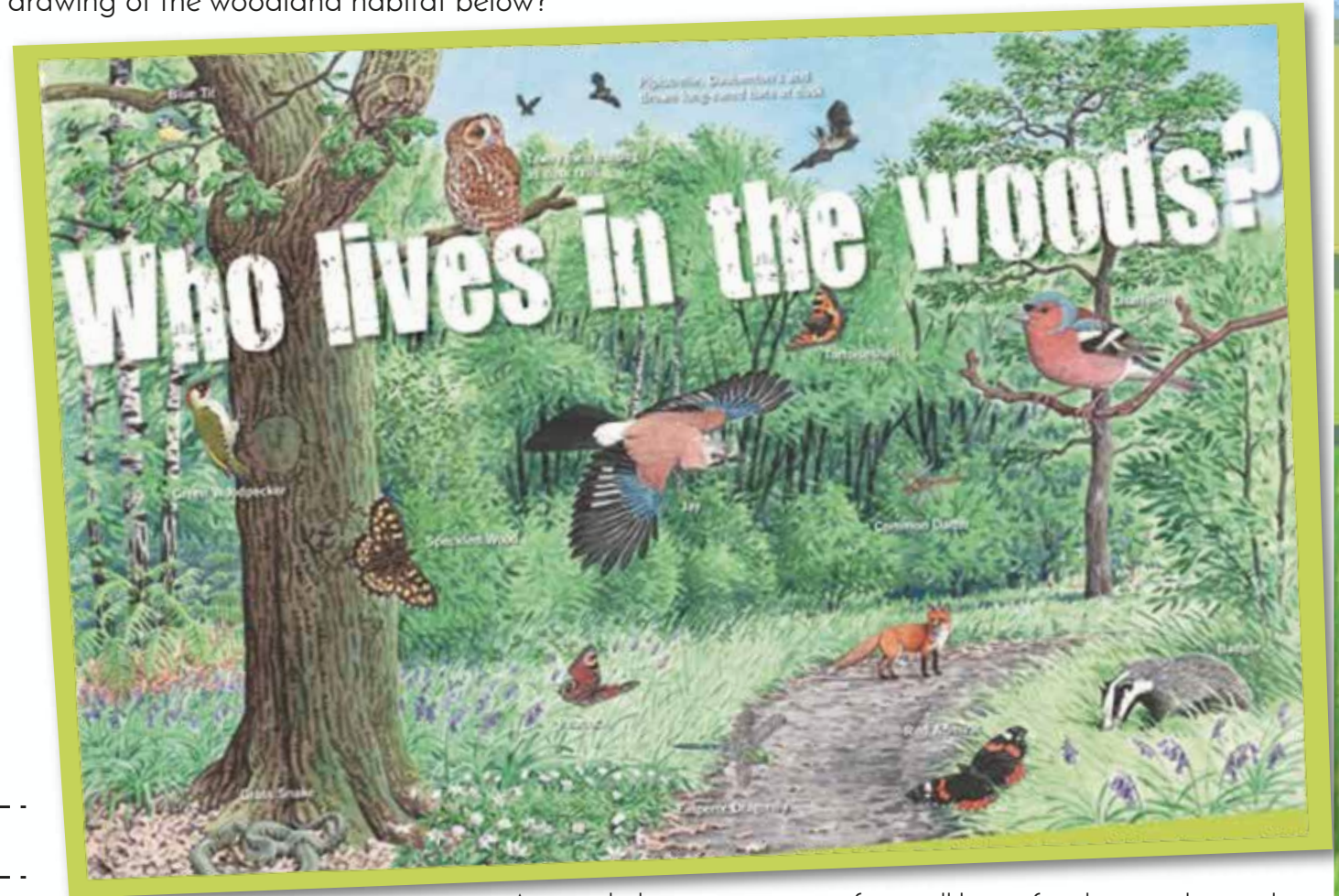
How many birds can you see?

How many mammals can you see?

How many reptiles can you see?

How many insects can you see?

Can you think of any other animals that are suited to a woodland environment?






A micro-habitat is a very specific, small home for plants and animals. For example, under a stone, within a tree hollow, or under leaves.

# Microhabitats pictogram

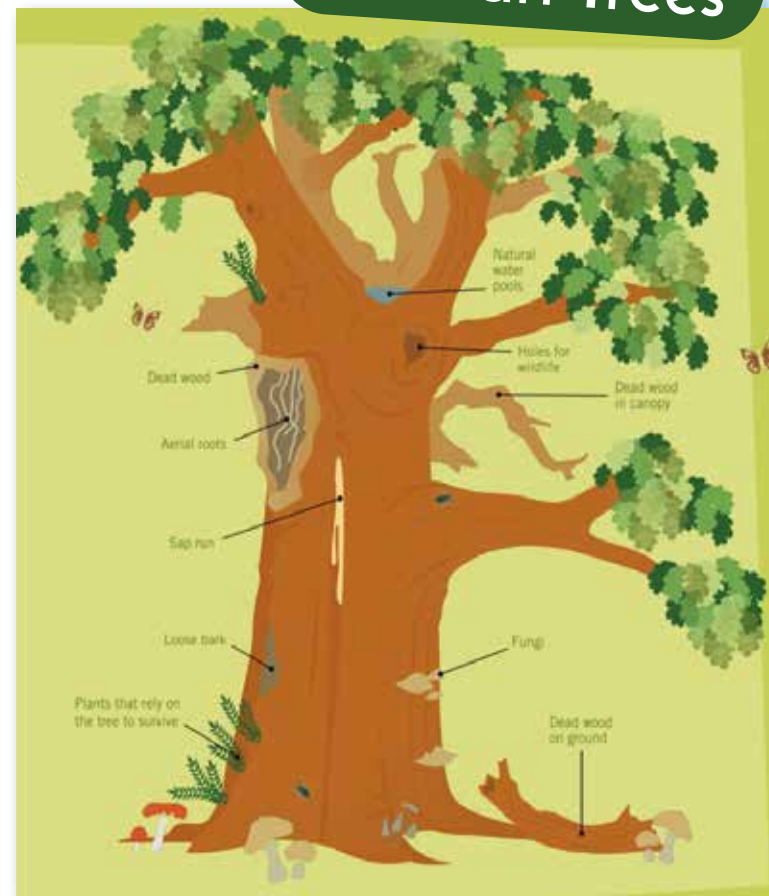
A microhabitat is a very specific, small home for plants and animals. For example, under a stone, within a tree hollow, or under leaves. Create a microhabitats pictogram by drawing pictures of the animals you find. Can you add some other microhabitats to the diagram?

If you found 3 woodlice hiding under a log pile, make sure you draw all 3 so you can record both the number and the types of creature found.

						
Under the ground	Under Stones	Log Piles	Tree holes			

Microhabitats

## Veteran Trees



Veteran trees have reached maturity (old age!) and have started to decline in health.

The trees and the deadwood on and around them make ideal homes, known as 'microhabitats' for all sorts of plants and creatures, from mosses and lichens to bats, beetles and birds.